

St Nicholas C of E Primary School SEN Information Report

A Guide for Pupils and their Parents and Carers

This report has been produced with students, parents/cares, governors and staff -
December 2020 *J Jeanes*

For more information about the Somerset Local Offer
please look at the Somerset County Council website at:

<https://www.somerset.gov.uk/education-and-families/somersets-local-offer/>



What do we do to help you at school?



We will make sure you have exciting things to learn and if you need more help, we will give you this.



How do we know if you may have a Special Education Need?

- You might find the work in class too difficult.
- You might need help to make progress with your learning.
- You might not learn as quick as your classmates.
- You might tell us that something is not quite right for you.
- Your teacher or parents/carers may tell us something is not quite right for you.



You may need help with:

There are four broad areas of need:

1. Cognition and Learning
2. Communication and Interaction
3. Social, Emotional and Mental Health
4. Physical and Sensory

- Talking and playing with others.
- Learning and remembering things.
- Feeling good about yourself and helping others,
- Using all the schools facilities.

Once we have found out what you need help with, we will put in place what it is you need.



At St Nicholas C of E Primary School we understand that the purpose of identification is to work out what action we need to take to support a pupil, not to fit a pupil into a category. In practice, individual children or young people often have the needs that cut across all these areas and their needs may change over time.

Who is the Special Needs Coordinator? (SENCo)

- Mrs. Spike is our Special Needs Coordinator.
- She is mainly based in the SENCo Office, but will come into your classes to help you.
- If you feel you need some help learning things other than reading, writing or numbers Mrs. Spike will also be able to help you in the Bee Hive.
- If your parents/carers need to speak to Mrs. Spike they can ring (01963) 362308 or speak with her on a Tuesday or a Wednesday.



Mrs Spike



Who else may help me?

Emotional Literacy Support Assistant ELSA

- Mrs. Rozycki can be found in The Bee Hive room or Hedgehog Class.
- Mrs. Rozycki helps to support and encourage our learning environment throughout the school which allows us to acquire and develop emotional literacy skills.

SEMH Support Assistant

Mrs Willes runs small groups which help us to take turns, share and be able listen and talk together. These groups are: Lego, Play-Doh and Lunch Bunch.



Theraplay

Mrs Payne runs our STARS group which is based on Theraplay technique and aims to build resilience, confidence and improve social skills through play based activities.

Gardening/Forest School

Mrs Howell runs our gardening school.

Throughout the school year every child will be given the opportunity to go outside and help in the garden for half a term in small groups. This will help develop co-operation and team building skills.



Who can help you?

There are lots of people in school who can help you:

- Your Class Teacher
- SENCos
- Teaching Assistant
- Lunchtime Supervisor
- ELSA
- Another Teacher
- Office Staff
- Head Teacher
- Caretaker



What if you need more help?

An Education, Health and Care Plan (EHCP) details the SEN provision a child/young person will receive from 0-25 years of age. An EHCP works with all agencies meeting with the parents/carers and child. The school, parents, pupil and the local authority work together to determine the nature of the child's needs and assess whether an EHCP is necessary for the child to be able to access the relevant curriculum on offer.

At St Nicholas C of E Primary School if we think you need more help we will ask other people to come and work with you. They are all very nice and want the best for you. We can apply for an Education, Health and Care Plan for you. If you get one of these it means that you will get more help with your work and other things until you are 25 years old if you need it.



How do we involve your parents/carers with your learning?



We want your parents/carers to be involved with your life at St Nicholas.

We will invite them into school to chat about your progress and to see your work. You can be there too, of course, to show them any work that you are particularly proud of.



Continued...

We will chat with you about what you feel your next steps should be in your learning and make sure that your parents/carers are happy with these too.



In the event of a complaint, an open dialogue between parents and staff is encouraged, with the aim that any issues can be resolved. Ultimately, if necessary, parents can follow the formal complaints procedure set out in the school policy and website.



How do we help you in class?

We can support you in lots of ways:

- Sometimes you may need a grown-up to help you with your learning.
- Sometimes a picture timetable of the day will help.
- You may need an iPad to complete your work.
- Sometimes you may need your work made easier or harder for you.
- You might need different equipment to help you.
- Sometimes you might need time to relax.



All of our Teachers and Teaching Assistants receive regular training to be able to support you.

We will make sure our teachers and teaching assistants are trained to meet your needs. If we need additional people in school to help you we will get them in. You may need help from a Speech and Language Therapist, an Educational Psychologist or someone different.

- Some Teachers and Teaching assistants have had training in:
 - Dyslexia
 - ADHD
 - ASD
 - Sensory Processing
 - Quality First Teaching
 - ICT to support SEN



How do we know we are helping you to achieve your best?

- Every term your teacher will meet with Mrs Shearer and Mrs. Spike to discuss your progress.
- If you are making good progress we will keep doing what we are doing.
- If you need extra help we will change what we are doing to support you and your learning.



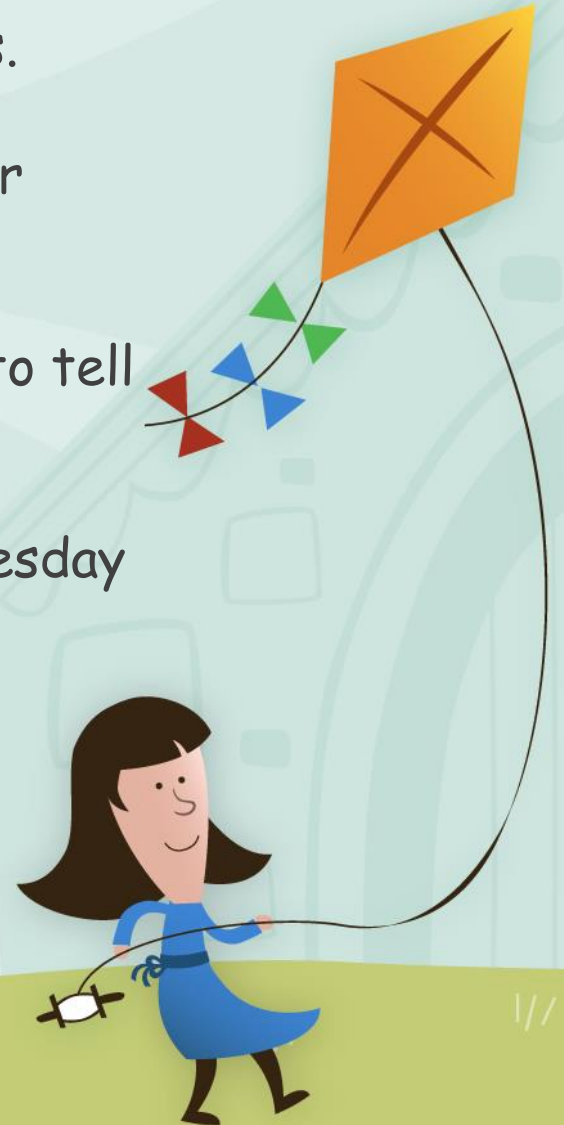
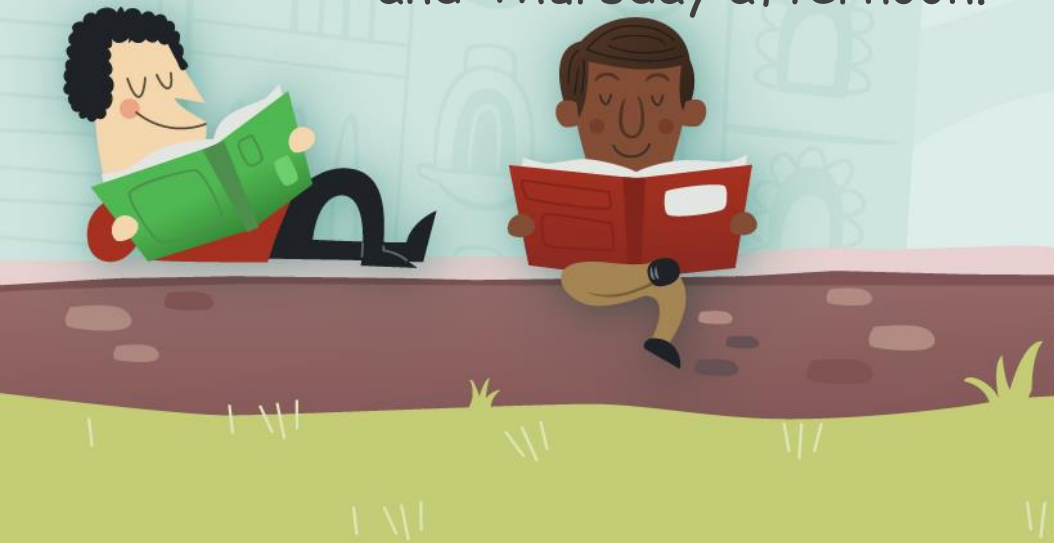
Moving on to a new class or school

- Sometimes moving to a new class or school can be a little worrying.
- At St Nicholas C of E Primary School we will do all we can to support you with this.
- You might have more visits to your class or new school.
- You might meet your teacher more.
- Mrs. Spike will chat to the other school SENCo to make sure they know all about you and how you learn best.



How can we help you feel good about yourself?

- We have Circle Time, which allows you to discuss your feelings.
- In each class we have a Worry Muncher which you can put your worries in and an adult can chat to you if you would like.
- We are a telling school - this means that you are encouraged to tell someone if you are upset or worried about anything.
- We have a nurture room (The Bee Hive) which is open on a Tuesday and Thursday afternoon.



Some of the clubs we offer

- Choir
- TeaBirds (Afterschool Club)
- Football
- Choir
- Athletics
- Sports





Governors



The people who look after our school are called Governors. The Governor who helps with Special Educational Needs is called Mrs. Jeanes.

Mrs Jeanes needs to make sure that we put information on the website about how we support you. You can look on our website - www.stnicholashenstridge.co.uk

Coronavirus, sadly limited the school with the new planned provision for SEN 2019/20, so the plan remains for 2020/21.

- Coffee Mornings (virtual) with guest speakers
 - Regular CPD SEN training for all staff
 - School SEN Newsletter
 - Up to date information on the schools new website
 - SEND Surgeries



Support on offer in Somerset

- For information on Somerset's Local Offer visit:

www.somerset.gov.uk/education-and-families/somerset-local-offer/

- Somerset Parent Carer Forum offers support to families with SEND.

www.somersetparentcarerforum.org.uk

Somerset SENDIAS give children, young people and their parent carers information, advice and support about SEND. This can include information on Education, Health and Care (EHC) Needs Assessments and Plans.

www.somersetsend.org.uk/

www.choices.somerset.gov.uk/025/send-news/



SOMERSET Choices
For ages 0 to 25



If you would like any information regarding local courses to support your child please speak to Mrs Spike.



If you have any questions or worries please speak to a grown up in school.

We are all here to help you to achieve your best.

